



**NEO UHF read/write
Test Software UHFDemo
User Manual**

Contents

1	Initial Operation.....	3
1.1	Remarks.....	3
1.2	Hardware connection, Driver Installation	3
2	Software Test	4
2.1	Open DEMO software, to click following exe file:	4
2.2	Software connection	4
2.3	Read card Operation	5
2.4	Read Tag Information	6
2.5	Tag Setting operation	7
2.6	Read/Write operation	8

1 Initial Operation

1.1 Remarks

- This demo is provided for simple testing purpose, other incomplete operation or function can be customized, or new developed basing on the document in the SDK file package by customer themselves.
- If there are any unclear problem or questions when using this DEMO, please contact our sale person or technical engineer for support.

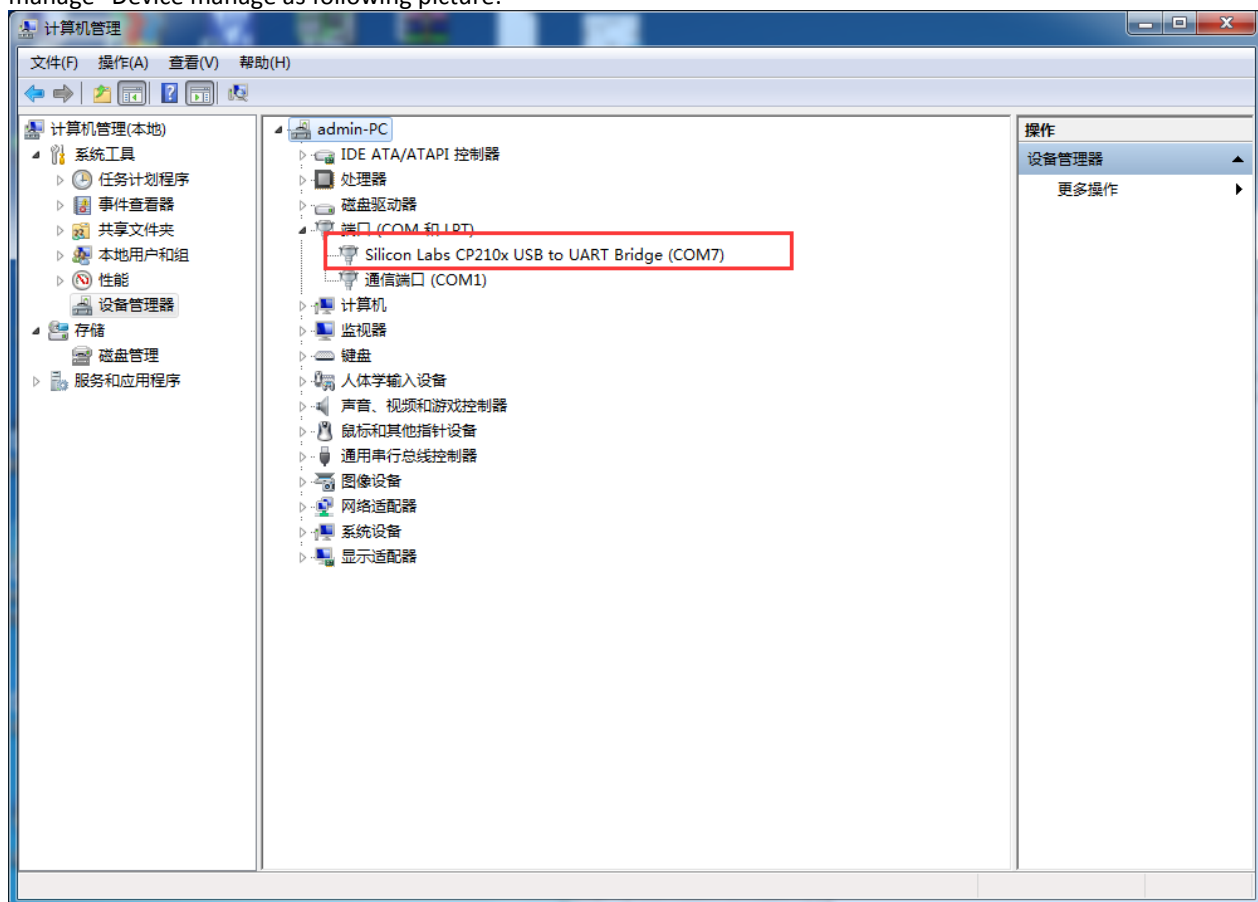
1.2 Hardware connection, Driver Installation

Normally the USB drivers are automatically installed with Windows operating systems.

If this does not work, you can download the latest drivers here:

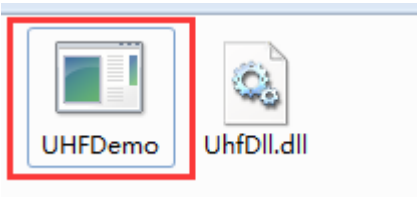
<http://www.silabs.com/products/mcu/pages/usbtouartbridgevcpcdrivers.aspx>

Please plug Reader's USB cable to port in PC side, then check the COM port if it's recognized, the checking way is: Open PC manage--Device manage as following picture:



2 Software Test

2.1 Open DEMO software, to click following exe file:



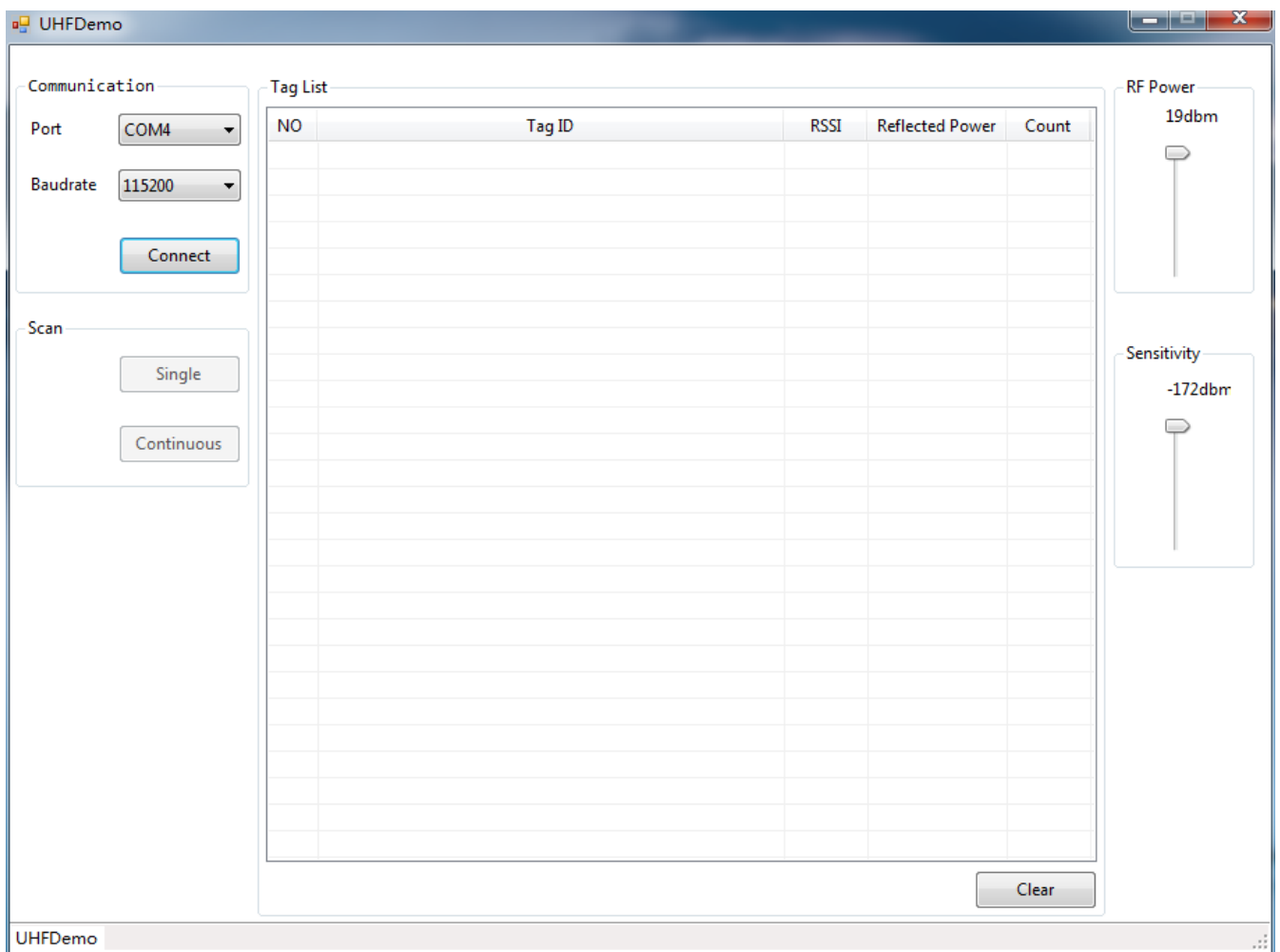
2.2 Software connection

To set reader connect in software, when you open the DEMO, the communication information will be:

Port: Port number will be auto-selected available one, when there is more than, it may need to manually select the one right on.

Baudrate: default as 115200bps

After check those configuration, Click Connect for connection.

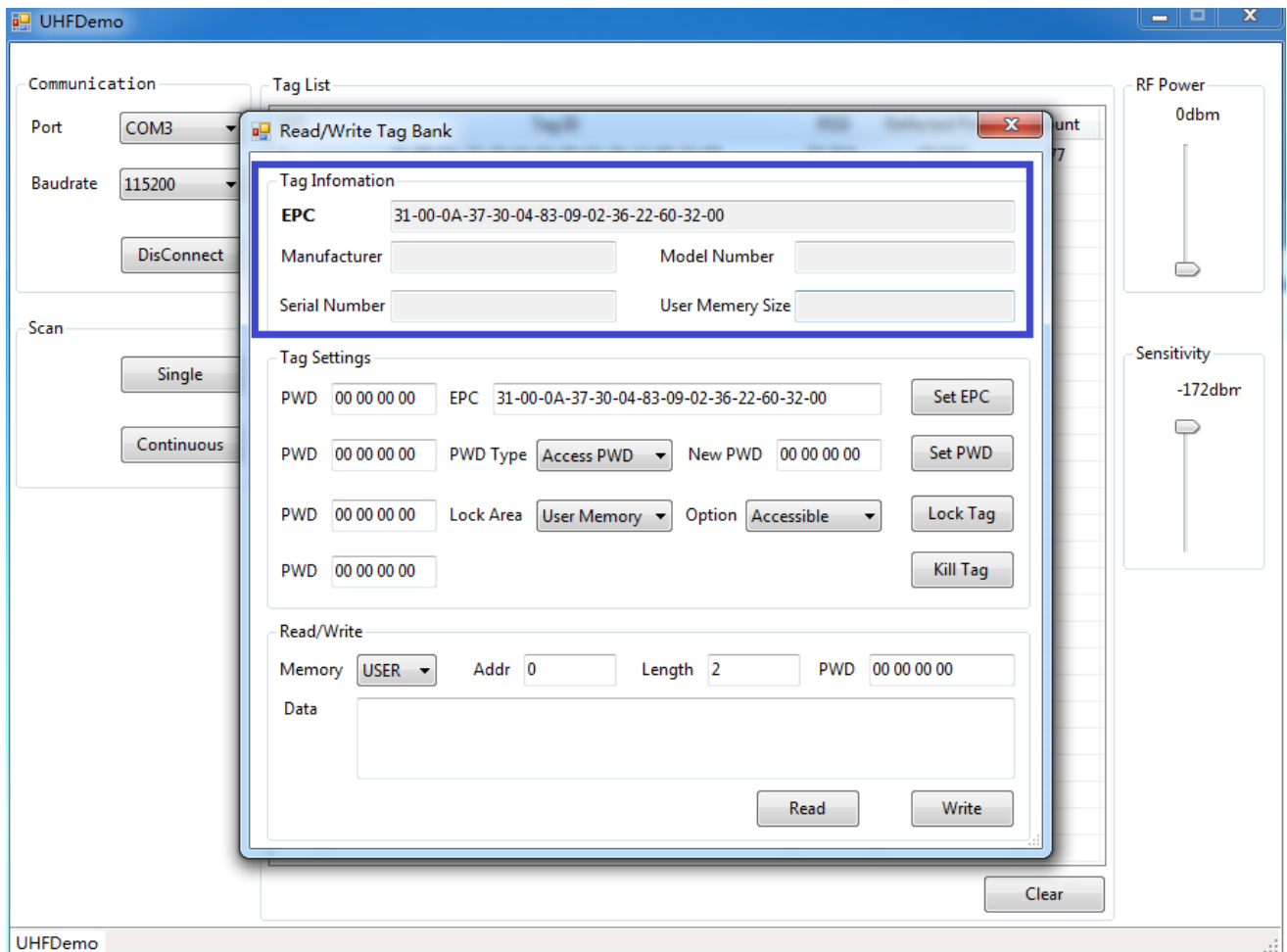


2.4 Read Tag Information

Notes

Before enter the Read/Write interface, please make sure the card to be read/written in the antenna detecting area, and use Scan button to Read the card/tag ID firstly, and keep the card stayed, if any move, then please use Scan button to re-scan again.

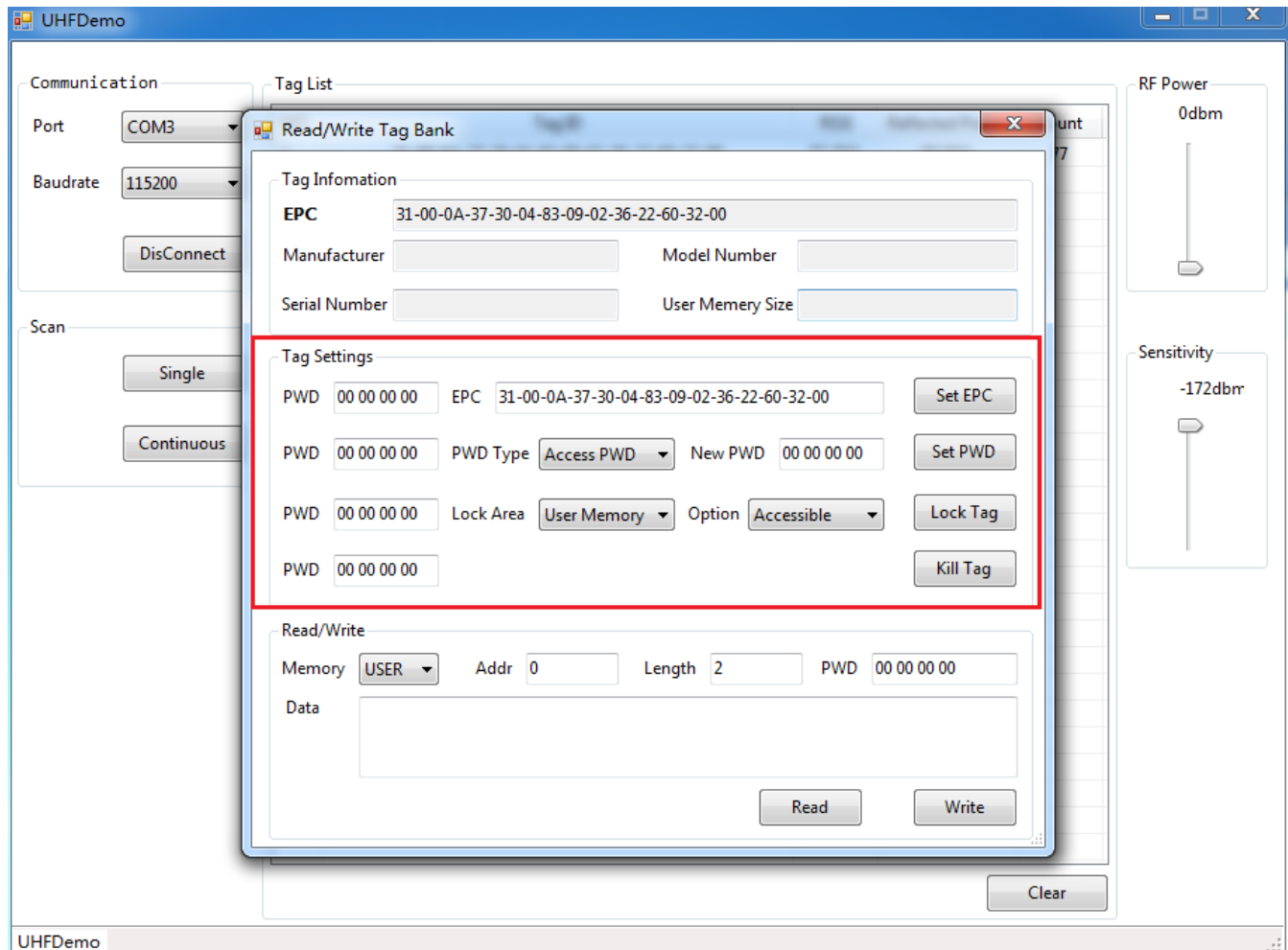
To choose the card on the Tag List box, and double this card ID, then will be enter into Read/write Tag Bank interface as following picture:



And there will display Tag's information, including EPC code default, tags chipset manufacture, model number, serial number and user memory size

2.5 Tag Setting operation

There provides functions for Set EPC, Set PWD, Lock Tag and Kill Tag function, please operate them basing on the datasheet of different tag accordingly.



Functions

- Set EPC: data format to be set must be HEX in length of 14 bytes (PC + EPC), any other commands compliant with this format will be operated failed.
- Set PWD: please refer to command format and password type in the datasheet of different ISO18000-6C compliant cards/tags
- Lock Tag: it's need to use relative password of the area to be locked, others please refer to datasheet of related tags/cards
- Kill Tag: the right password need for this function

2.6 Read/Write operation

This function enable to operate with different memory, different address with multiple length and password to read or write with the ISO18000-6C tags/card, as following picture:

